

Double-Acting Cylinder D series

Description of the type

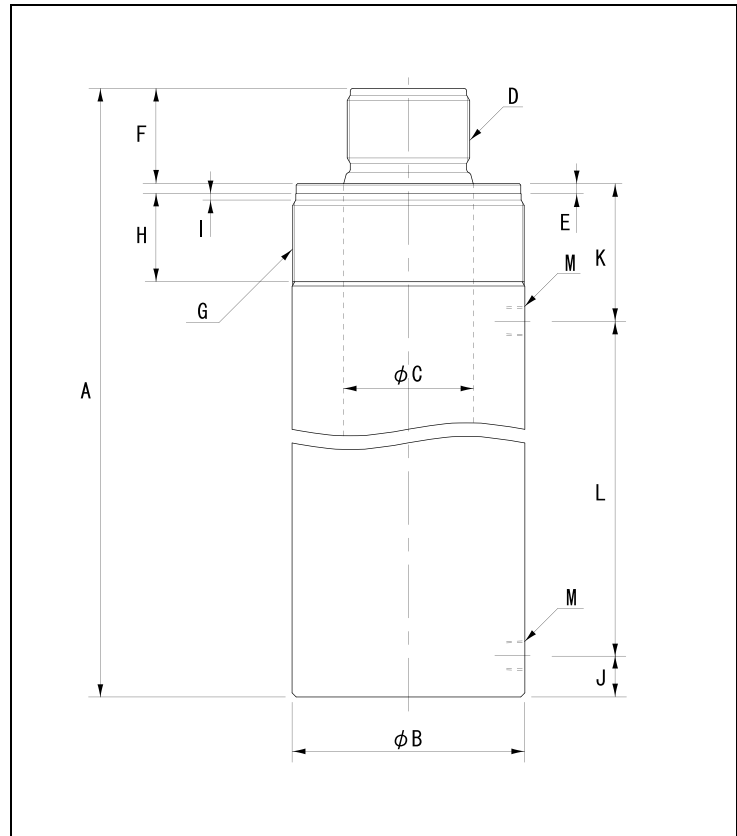
D 30 - 300

Maximum output
30: 3 000 kN
50: 5 000 kN

D series

Stroke (mm)

●The piston is coated.



Specification

		3000kN			5000kN		
Type		D30-300	D30-500	D30-850	D50-300	D50-500	D50-850
Maximum operating pressure	MPa	70			70		
Push side	Maximum output	3,000			5,000		
	Effective area	433.73			730.04		
Pull side	Maximum output	1,430			2,390		
	Effective area	206.75			349.90		
Stroke	mm	300	500	850	300	500	850
Minimum overall length	A	811	1,010	1,360	891	1,091	1,441
Inner diameter of the cylinder	ϕ	235.0			304.88		
Outside diameter of the cylinder	ϕB	315			410		
Piston diameter	ϕC	170			220		
Piston screw diameter	D	M150 × 3			M180 × 4		
No thread length	E	9			-		
Piston ejection length	F	86			90		
Collar thread diameter	G	M315 × 4			M410 × 6		
Collar thread length	H	89			97		
None thread length	I	4			5		
Push coupler position	J	45			50		
Pull coupler position	K	148			147		
Distance between ports	L	532	731	1081	604	804	1154
Coupler connection diameter	M	Rc3/4			Rc1		
Attached coupler	-	-	-	-	-	-	-
Necessary oil level	cm ³	13,012	21,687	36,867	21,902	36,502	62,054
Approximate weight	kg	398	494	650	740	928	1,164

Available attachments

		D30-300	D30-500	D30-850	D50-300	D50-500	D50-850
Piston	Cap	R-300P			R-500P		
	Piston base	-			-		
	Clevis	-			-		
Flange	300F			500F			
Cylinder hanging hook	TH-315 (Hanging hook type)			-			