

# Strong-Type Double-Acting Cylinder SD series Production by order

- Excellent durability ensures safety even when frequently used.
- Couplers are not included in any model.
- A width across flat is provided at the piston area.

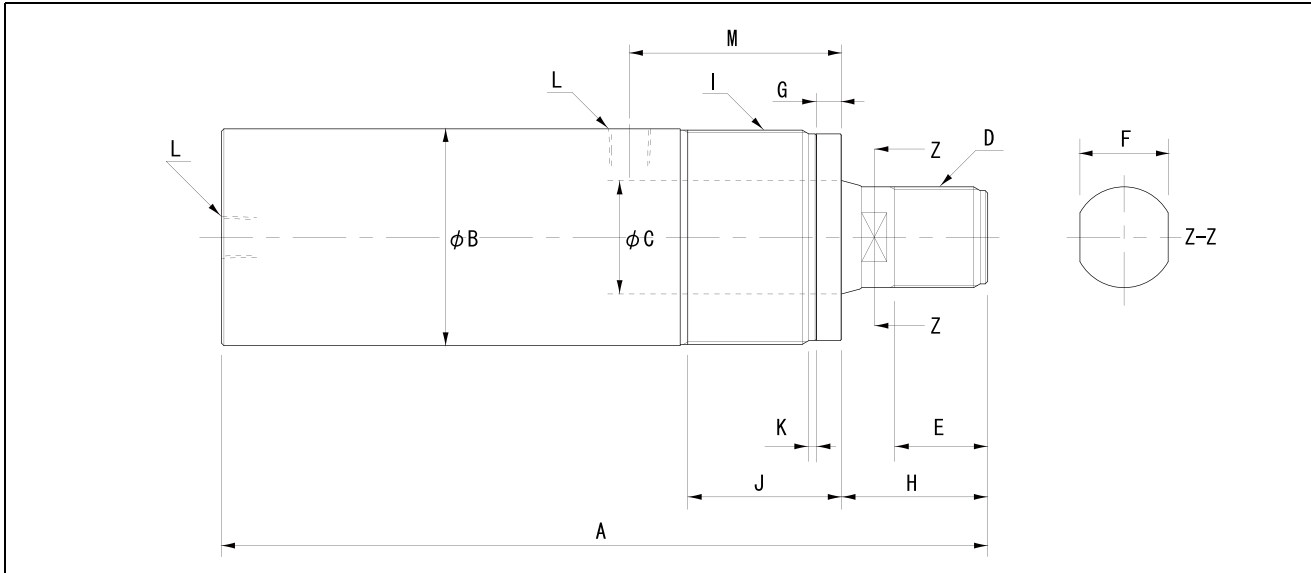
**Description of the type**

**SD 3.5-100**

Maximum output  
 3.5 : 350 kN  
 5 : 500 kN  
 7 : 700 kN

SD series                      Stroke (mm)

Hydraulic Cylinders



## ■ Specification

		350kN		500kN			700kN		
Type		SD3.5-100	SD3.5-150	SD5-50	SD5-100	SD5-150	SD7-100	SD7-150	SD7-200
Maximum operating pressure	MPa	70		70			70		
Push side	Maximum output	350		500			700		
	Effective area	50.26		71.63			102.69		
Pull side	Maximum output	184		282			357		
	Effective area	26.5		40.45			52.43		
Stroke	mm	100	150	50	100	150	100	150	200
Minimum overall length	A	398	448	385	435	485	472	522	572
Inner diameter of the cylinder	phi	80.0		95.5			114.35		
Outside diameter of the cylinder	phi B	110		131			156		
Piston diameter	phi C	55		63			80		
Piston screw diameter	D	M50 x 2		M57 x 2			M75 x 2		
Piston screw length	E	45		55			55		
Width across flat	F	44		52			68		
No thread length	G	8		12			12		
Piston ejection length	H	63		73			73		
Collar thread diameter	I	M110 x 2.5		M130 x 3			M155 x 3		
Collar thread length	J	55		55			60		
None thread length	K	4		4			4		
Coupler connection diameter	L	Rc3/8		Rc1/2			Rc1/2		
Pull port position	M	93		102			112		
Attached coupler	-	-	-	-	-	-	-	-	-
Necessary oil level	cm <sup>3</sup>	503	754	359	717	1075	1027	1541	2054
Approximate weight	kg	23	26	32	36	40	57	63	68

## ■ Available attachments

		SD3.5-100	SD3.5-150	SD5-50	SD5-100	SD5-150	SD7-100	SD7-150	SD7-200
Piston	Cap	R-35P			Exclusive (Production by order)			Exclusive (Production by order)	
	Piston base	RB-35			Exclusive (Production by order)			Exclusive (Production by order)	
	Clevis	CLF-35-1 (2)			Exclusive (Production by order)			Exclusive (Production by order)	
Flange	35F			Exclusive (Production by order)			Exclusive (Production by order)		