

Strong-Type Double-Acting Cylinder SD series

Production by order

Hydraulic Cylinders

- Excellent durability ensures safety even when frequently used.
- Couplers are not included in any model.
- Only the SD10 type has a width across flat at the piston area.

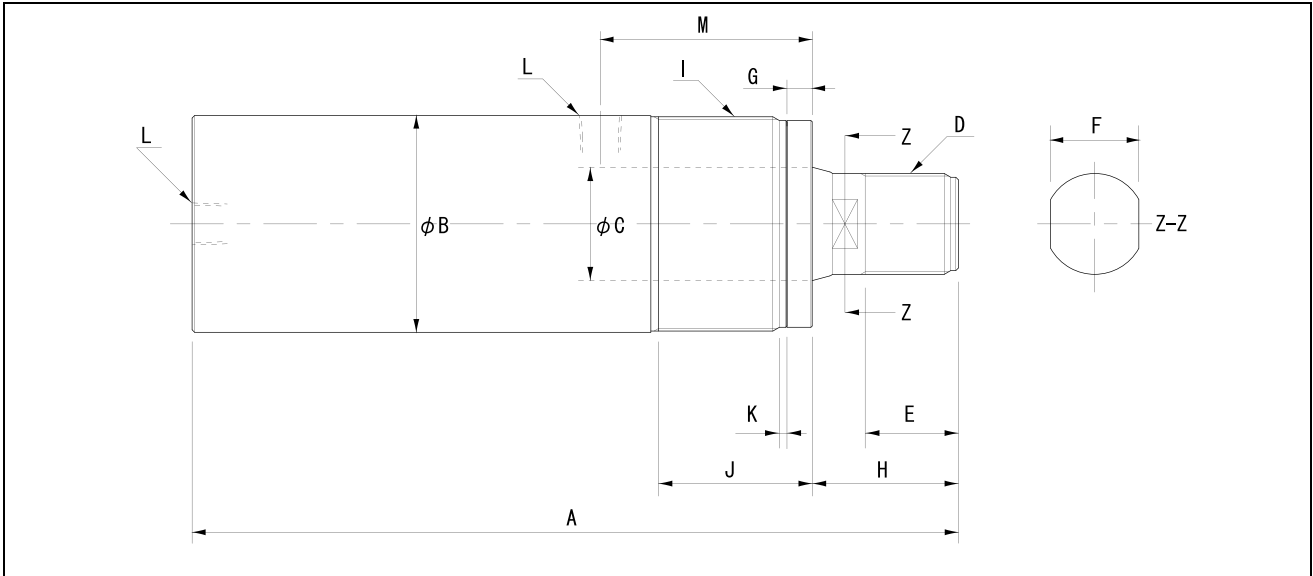
Description of the type

SD 10 - 150

Maximum output
 10: 1 000 kN
 20: 2 000 kN
 30: 3 000 kN
 50: 5 000 kN

SD series

Stroke (mm)



■ Specification

		1000kN			2000kN			3000kN		5000kN	
Type		SD10-150	SD10-200	SD10-300	SD20-150	SD20-200	SD20-300	SD30-200	SD30-300	SD50-200	SD50-300
Maximum operating pressure	MPa	70			70			70		70	
Push side	Maximum output	1,000			2,000			3,000		5,000	
	Effective area	146.55			292.55			433.73		730.04	
Pull side	Maximum output	516			948			1,430		2,390	
	Effective area	75.66			138.61			206.75		349.90	
Stroke	mm	150	200	300	150	200	300	200	300	200	300
Minimum overall length	A	568	618	718	663	713	813	798	898	897	997
Inner diameter of the cylinder	φ	136.6			193			235		304.88	
Outside diameter of the cylinder	φB	191			266			326		421	
Piston diameter	φC	95			140			170		220	
Piston screw diameter	D	M90 × 3			M130 × 3			M160 × 3		M200 × 3	
Piston screw length	E	65			70			80		80	
Width across flat	F	82			-			-		-	
No thread length	G	12			12			12		15	
Piston ejection length	H	85			84			94		94	
Collar thread diameter	I	M190 × 3			M265 × 4			M325 × 4		M420 × 6	
Collar thread length	J	65			70			90		95	
None thread length	K	4			4			4		5	
Coupler connection diameter	L	Rc1/2			Rc1/2			Rc3/4		Rc1	
Pull port position	M	122			152			172		203	
Attached coupler	-	-	-	-	-	-	-	-	-	-	-
Necessary oil level	cm ³	2,199	2,931	4,397	4,389	5,851	8,777	8,675	13,012	14,601	21,902
Approximate weight	kg	102	110	128	241	258	292	436	487	830	914

■ Available attachments

		SD10-150	SD10-200	SD10-300	SD20-150	SD20-200	SD20-300	SD30-200	SD30-300	SD50-200	SD50-300
Piston	Cap	R-100P			Exclusive (Production by order)			Exclusive (Production by order)		Exclusive (Production by order)	
	Piston base	RB-100			Exclusive (Production by order)			Exclusive (Production by order)		Exclusive (Production by order)	
	Clevis	-			-			-		-	
Flange	Exclusive (Production by order)			Exclusive (Production by order)			Exclusive (Production by order)		Exclusive (Production by order)		