

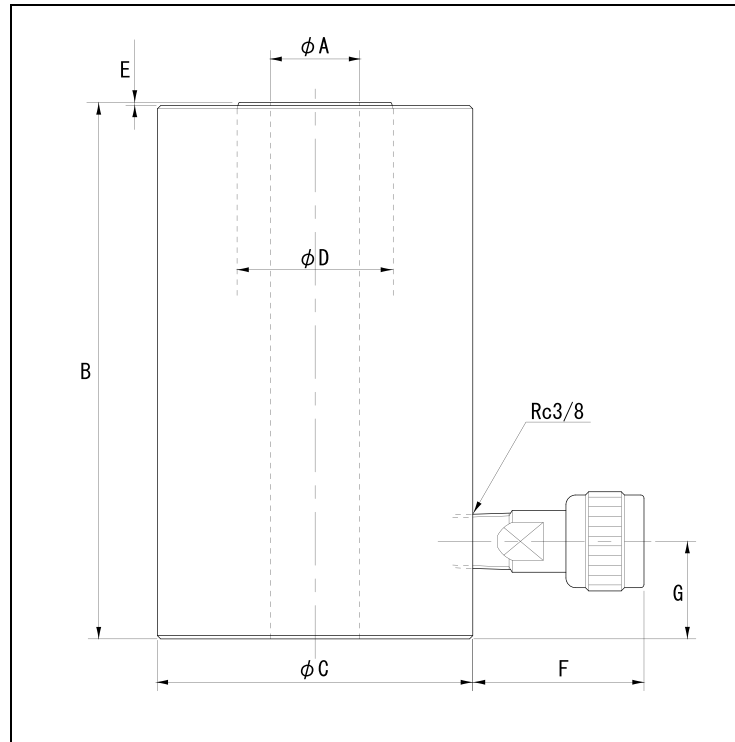
Single-Acting Type Center Hole Cylinder SC series (return-by-spring type)

Description of the type

SC 1.2 - 40

SC series	Maximum output	Attached coupler	
	1. 2 : 120 kN		No mark : S-1R
	2 : 200 kN		T : ROC-13R
	3. 6 : 360 kN		NC : W/O coupler
	6 : 600 kN		
	Stroke (mm)		

- A through-hole is provided at the center of the piston, and is useful for various tensile tests and tension units.
- SC6-20 has a handle.



Specification

		120kN	200kN	360kN		600kN
Type		SC1.2-40	SC2-40	SC3.6-20	SC3.6-30	SC6-20
Maximum operating pressure	MPa	70	70	70		70
Maximum output	kN	120	200	360		600
Effective area	cm ²	17.86	28.86	51.42		88.55
Stroke	mm	40	40	20	30	20
Center hole diameter	phi A	19.5	27.5	36.5		54.5
Minimum overall length	B	126.5	165	141	161	170
Inner diameter of the cylinder	phi	54	70	95.5		130
Outside diameter of the cylinder	phi C	70	97	127		170
Piston diameter	phi D	35	48	70		95
Piston ejection length	E	1.5	1	1		3
Coupler ejection length	F	≒70 (Note)	≒53	≒53		≒53
Coupler position	G	40	30	42		32
Coupler connection diameter	-	Rc3/8	Rc3/8	Rc3/8		Rc3/8
Attached coupler	-	S-1R	S-1R	S-1R		S-1R
Necessary oil level	cm ³	72	116	103	155	178
Approximate weight	kg	3.0	7.8	11.3	12.7	25.0

(Note) The port of SC1.2-40 has a boss of 17 mm length.

Pressure gauge with load scales (Standard stock)

- A pressure gauge in which load scales corresponding to the cylinder effective area are indicated in addition to the pressure scales (not included in the inspection items).
- These pressure gauges with load scales are available on request except for the following types.
- The inspection report, traceability system diagram, and calibration certificate are not included. If necessary, please indicate your requirements when ordering.

Type	Effective area (cm ²)	Corresponding cylinder
AS100-120kN	17.86	SC1.2
AS100-200kNCS	28.86	SC2
AS100-360kN	51.42	SC3.6

