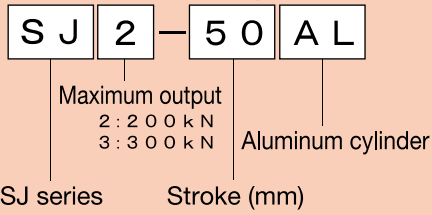


Light Cylinder for Jack-Up (aluminum cylinder)

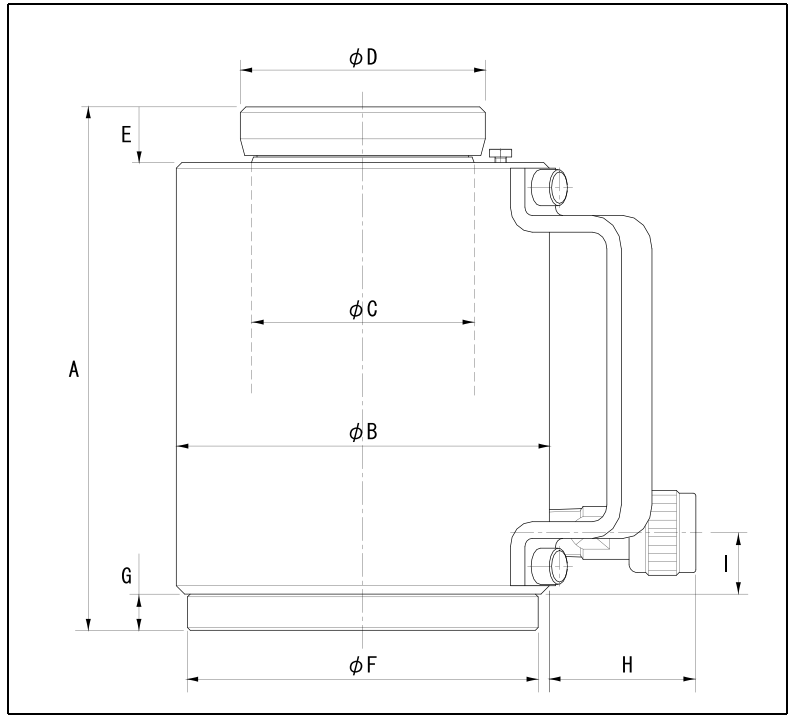
Hydraulic Cylinders

Description of the type



- Super-high durable aluminum materials are used for the whole part, reducing the weight to about half that of the standard cylinder.
- Special surface treatment of the entire part assures good wear resistance.
- While the cylinder is being used, the load should be supported by the whole surfaces of the piston/base sides.
- When an unbalanced load may be applied in some circumstances, a tilt saddle (optional) should be used.

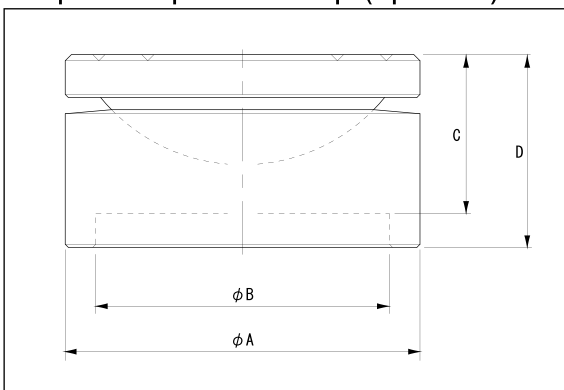
※The 300 kN type is available on request.



■ Specification

		200kN			300kN		
Type		SJ2-50AL	SJ2-100AL	SJ2-150AL	SJ3-50AL	SJ3-100AL	SJ3-150AL
Maximum operating pressure	MPa	70			70		
Maximum output	kN	200			300		
Effective area	cm ²	28.74			44.17		
Stroke	mm	50	100	150	50	100	150
Minimum overall length	A	167	225	290	184	234	304
Inner diameter of the cylinder	φ	60.5			75.0		
Outside diameter of the cylinder	φB	98			114		
Piston diameter	φC	53			65		
Outside diameter of the cap	φD	58			70		
Piston ejection length	E	17			20		
Base diameter	φF	92			105		
Base height	G	10			13		
Coupler ejection length	H	≒53			≒53		
Coupler position	I	22			22		
Coupler connection diameter	—	Rc3/8			Rc3/8		
Attached coupler	—	S-1R			S-1R		
Necessary oil level	cm ³	144	288	432	221	442	663
Approximate weight	kg	4.5	5.6	6.9	6.3	8.6	11.1

■ Special spherical cap (optional)



■ Dimension list

Type	Specification	A	B	C	D	Approximate weight (kg)
RAL-20	For 200 kN	58	48	26	31.5	0.5
RAL-30	For 300 kN	70	60	32	37.5	0.9

※The cap should be used when an unbalanced load may be applied.

※Maximum vibration angle: 5 deg