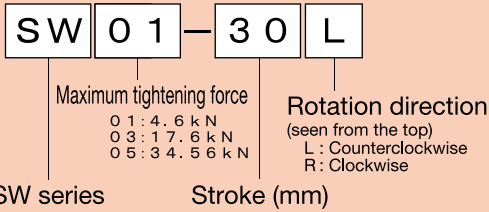


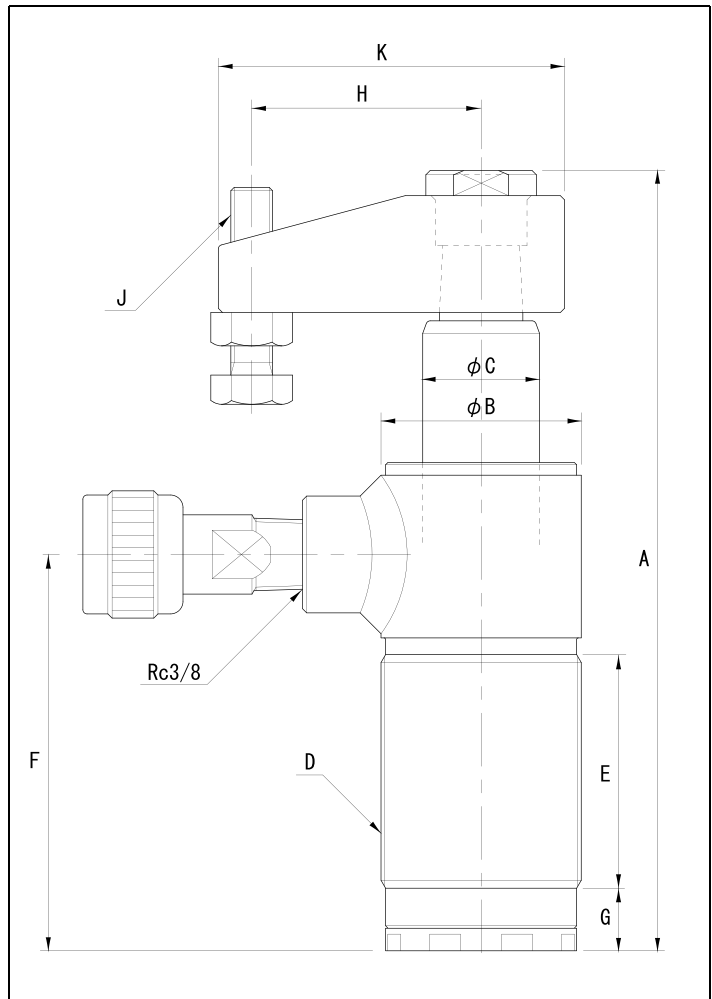
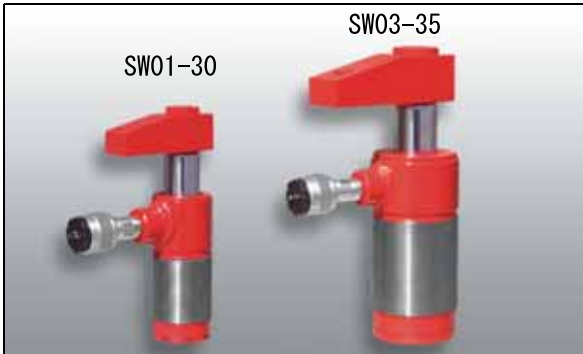
Swing Cylinder SW series (maximum operating pressure: 40 MPa)

Hydraulic Cylinders

Description of the type



- SW01 and SW03 are single-acting, return-by-spring types.
- SW05 is a double-acting type.
- The swing cylinder rotates 90 deg while the arm lowers. The cylinder then lowers vertically a few millimeters and is used for clamping, etc.
- Two types are available: the R type for right rotation (the arm rotates clockwise seen from the top) and the L type for left rotation (the arm rotates counterclockwise seen from the top).
- The arm can be adjusted to any position in relation to the port.
- When the arm length is changed, the pump pressure should be reduced for the length extending from the standard arm.
- Clamping during swing should be avoided.
- ※ The SW05 type does not include nuts and bolts for the arm area.



■ Specification

		4.6kN		17.6kN		34.56kN	
Type		SW01-30L	SW01-30R	SW03-35L	SW03-35R	SW05-40L	SW05-40R
Maximum operating pressure	MPa	40					
Rotation direction	—	90 deg to the left	90 deg to the right	90 deg to the left	90 deg to the right	90 deg to the left	90 deg to the right
Return system	—	By spring		By spring		By hydraulic pressure	
Maximum output	kN	4.6		17.6		34.56	
Effective area	cm ²	1.15		4.42		8.64	
Stroke	Swing	mm 24		mm 28		mm 30	
	Straight	mm 6		mm 7		mm 10	
	Total	mm 30		mm 35		mm 40	
Maximum overall length	A	187		238		278	
Outside diameter of the cylinder	φ B	48		70		100	
Piston diameter	φ C	28		35.5		50	
Collar thread diameter	D	M48 × 1.5		M70 × 2		M100 × 2	
Collar thread length	E	56		81		90	
Pull coupler position	F	95		127		138	
Straight section	G	15		22		20	
Effective arm length	H	55		70		100	
Arm width	mm	28		38		70	
Arm screw dimension	J	M10 × 1.5		M16 × 2		M20 × 2.5	
Maximum arm length	K	83		114		165	
Coupler connection diameter	—	Rc3/8		Rc3/8		Rc3/8	
Attached coupler	—	S-1R		S-1R		S-1R	
Necessary oil level	cm ³	4.0		15.5		35.0	
Approximate weight	kg	2.0		5.5		15.0	