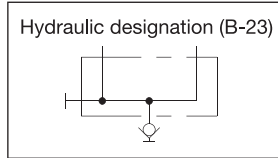


Branch for One Circuit

- Used to divide one hydraulic circuit.
- 3/8 and 1/2 sizes are available, and up to 5-way types are available for the 3/8 size and up to 4-way types are available for the 1/2 size.
- The S-1R coupler is attached to the 3/8 size and the S-24R coupler is attached to the 1/2 size, on the primary side of the branch (excluding B-2).



Description of the type Maximum operating pressure 70 MPa

B — **2** **3**

Branch (for one circuit)

No of outlets: 2, 3, 4
 Size: 3: Rc3/8 (round type), 4: Rc3/8, Rc1/2

B-2

B-33

Round branch (B-2)

Approximate weight 0.4 kg

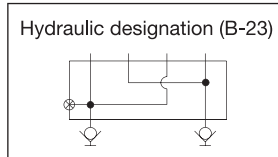
Square branch

■ Specification

Type	A	B	C	D (Rc)	E	F	G	H	I	J	K	L	M	N	O	Approximate weight (kg)
B-23	150	≈62	≈128	3/8	100	25	≈25	50	25	136	≈125	36	50	≈53	75	3.3
B-33	250									236	≈225					5.2
B-43	350									336	≈325					7.2
B-53	450									436	≈425					9.1
B-24	140	≈77	≈146	1/2	80	30	≈30	65	40	126	≈115	51	65	≈56	90	5.0
B-34	220									206	≈195					7.7
B-44	300									286	≈275					10.3

Branch for Two Circuits

- Used to divide two hydraulic circuits and to operate two double-acting cylinders by one pump.
- The S-1R coupler is attached to the 3/8 size and the S-24R coupler is attached to the 1/2 size, on the primary side of the branch.



Description of the type Maximum operating pressure 70 MPa

BW — **2** **3**

Branch (for two circuits)

No of outlets: 2, 3
 Size: 3: Rc3/8, 4: Rc1/2

BW-23

BW-24

Round branch (BW-23)

Square branch

() is BW-24, approximate weight of BW-23(24) is 6.4 kgs.

Accessories