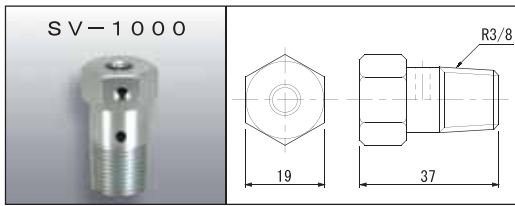


Various Types of Joints

■ Air Vent Valve



● A tee is provided at the actuator side of the hydraulic piping to remove the air in the circuit with this valve.

■ Specification

Type	Maximum operating pressure (MPa)	Connection diameter (R)	Weight (kg)
SV-1000	70	3/8	0.1

■ High-Pressure Cross/Elbow/Tee/Y-shaped Tee

Description of the type

Maximum operating pressure 70 MPa

C — **3 / 8**

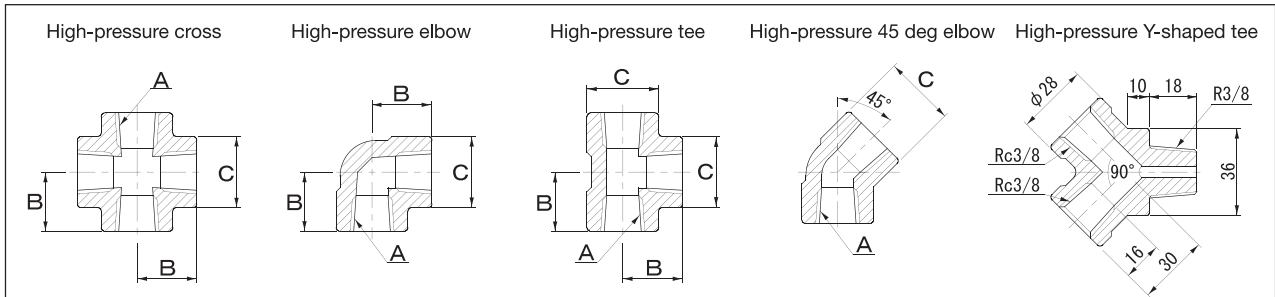
Size: 3/8
1/2
3/4
8/8

Shape — C : High-pressure cross
L : High-pressure elbow
T : High-pressure tee
Q : High-pressure 45 deg elbow

Cross	Elbow	Tee	45 deg elbow	A	B	C
C-3/8	—	—	Q-3/8	Rc3/8	30	φ 34
—	L-3/8	T-3/8	—	Rc3/8	30	Width across flats 32
—	L-1/2	T-1/2	—	Rc1/2	34	Width across flats 36
C-1/2	—	—	Q-1/2	Rc1/2	34	φ 39
C-3/4	L-3/4	T-3/4	Q-3/4	Rc3/4	38	φ 47
C-8/8	L-8/8	T-8/8	Q-8/8	Rc1	45	φ 57

※All the joints are coated.

※Only the 3/8 and 1/2 sizes of the high-pressure elbows/tees are hexagon.



■ High-Pressure Nipple

Description of the type

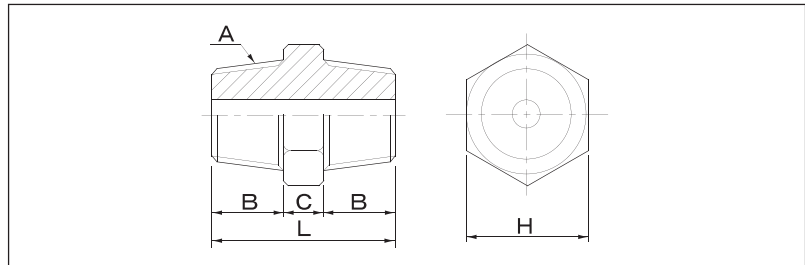
Maximum operating pressure 70 MPa

N — **3 / 8** — **40**

Size: 3/8
1/2
3/4
8/8

Overall length

High-pressure nipple



Type	N-1/4-40	N-NPT1/4 × R3/8	N-3/8-40	N-3/8-60	N-3/8-90	N-3/8-120	N-3/8-150	N-1/2-50
A	R1/4	NPT1/4-R3/8	R3/8	R3/8	R3/8	R3/8	R3/8	R1/2
B	13	NPT 1/4 side 13 R3/8 side 16	16	16	16	16	16	18
C	14	11	8	28	58	88	118	14
L	40	40	40	60	90	120	150	50
H	19	19	19	19	19	19	19	26

Type	N-1/2-100	N-1/2-150	N-3/8 × 1/2	N-3/4-80	N-3/4-120	N-3/4-150	N-8/8-80	N-8/8-120	N-8/8-150
A	R1/2	R1/2	R3/8-1/2	R3/4	R3/4	R3/4	R1	R1	R1
B	18	18	18	28	28	28	30	30	30
C	64	114	10	24	64	94	20	60	90
L	100	150	46	80	120	150	80	120	150
H	26	26	26	36	36	36	41	41	41

■ High-Pressure Socket

Description of the type

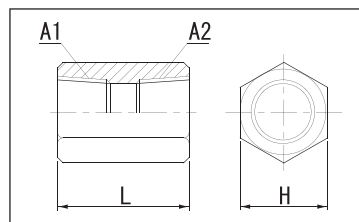
Maximum operating pressure 70 MPa

S — **3 / 8** × **1 / 2**

Bore diameter

Screw with different diameter

High-pressure socket



Type	A1	A2	L	H
S-NPT1/4 × Rc3/8	NPT1/4	Rc3/8	40	27
S-3/8		Rc3/8	40	26
S-3/8 × 1/2	Rc3/8	Rc1/2	40	32
S-1/2		Rc1/2	40	32
S-3/4		Rc3/4	60	41
S-3/4 × 8/8	Rc3/4	Rc1	75	55
S-8/8		Rc1	85	54