

Two-Stage Electric Pump (0.75 kW)

■ MP-5 series

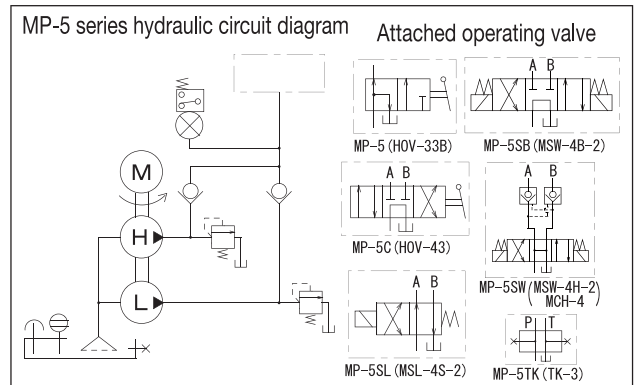
- A pump combining both high- and low-pressure pumps to be driven by one motor to improve the work speed.
- Equipped with a double-safety mechanism of a safety valve and pressure switch to prevent overload.
- We can also manufacture a single-phase motor (AC 100/200 V) specification.
- A one-point push-button switch is set in the MP-5D-PA type package pump, and a two-point push-button switch and a control box are set in the MP-5SW-PA/SB-PA types. Simply connect the power and the pump is ready to use.
- See P. 73 and 74 for the description of each model and the instructions.

⚠ Power should not be supplied continuously to the solenoid valve of the MP-5SL/5SW/5SB types for more than one minute to prevent adhesion of the spool.

Description of the type

MP	5	
Electric pump	Series No	

- No mark : For single-acting cylinder (manual change valve)
- C : For double-acting cylinder (manual change valve)
- SL : For single-acting cylinder (solenoid operated directional valve)
- SW : For double-acting cylinder (solenoid operated directional valve, pressure maintenance included)
- SB : For double-acting cylinder (solenoid operated directional valve, w/o pressure maintenance included)
- D-PA : Package pump for single-acting cylinder (solenoid operated directional valve)
- SW-PA : Package pump for double-acting cylinder (solenoid operated directional valve, pressure maintenance included)
- SB-PA : Package pump for double-acting cylinder (solenoid operated directional valve, w/o pressure maintenance)
- TK : For separately installed operating valve (w/o operating valve)



■ Motor specification

Insulation type	Voltage (number of phase) (V)	Output (kW)	Rated current (A)		Load current (A)		Number of revolutions (rpm)	
			50Hz	60Hz	50Hz	60Hz	50Hz	60Hz
Type E, totally-enclosed fan-cooled type	200 (Three phase)	0.75	3.9	3.5	3.6	3.7	1500	1800

※ The load current is a current value at 70 MPa.

■ Pump specification

Type	Maximum operating pressure (MPa)		Discharge volume (L/min) (50Hz/60Hz)		Tank oil level (L)	Effective oil level (L)	Attached operating valve	Approximate weight (kg)
	High pressure	Low pressure	High pressure	Low pressure				
MP-5	70	3	0.4/0.48	2.0/2.4	8.0	4.5	HOV-33B	60
MP-5C							HOV-43	61
MP-5SL							MSL-4S-2	65
MP-5SW							MSW-4H-2	70
MP-5SB							MCH-4	66
MP-5TK							None	59

MP-5

P.C.D. 345 4-M10 depth 25

No.	Name	Remarks
1	Oil tank	
4	Motor	
5	Electromagnetic switch	
6	Start switch	
13	High-pressure safety valve	
18	Pressure switch	DPS-100
22	Direction-control valve	HOV-33B
27	Air breather	
29	Oil gauge	
34	Oil-drain port	Rc3/8
35	Return inlet	Rc3/8
36	Outlet port	Rc3/8

● The above numbers don't correspond to the part numbers of the product. See the operation manual for the part numbers of the product.