

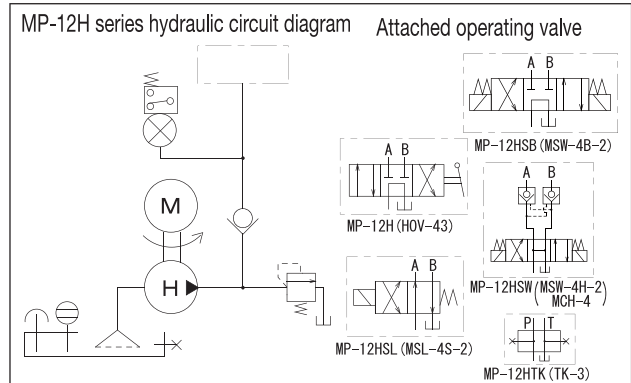
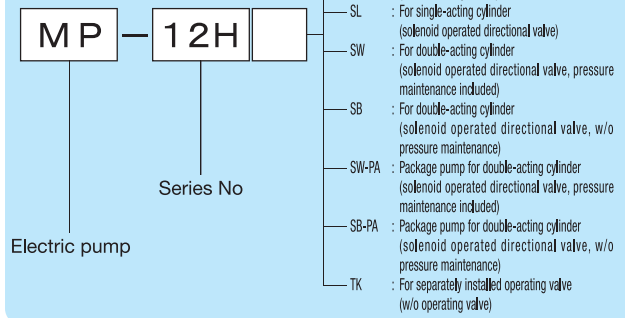
One-Stage Electric Pump (2.2 kW)

Hydraulic Pumps

■ MP-12H series

- A pump featuring a high-performance axial piston system which greatly reduces the change in discharge volume caused by pressure fluctuations.
 - Equipped with a double-safety mechanism of a safety valve and pressure switch to prevent overload.
 - A two-point push-button switch and a control box are set in the MP-12HSW-PA/SB-PA type package pump. Simply connect the power and the pump is ready to use.
 - See P. 73 and 74 for the description of each model and the instructions.
- ⚠ Power should not be supplied continuously to the solenoid valve of the MP-12HSL/12HSW/12HSB types for more than one minute to prevent adhesion of the spool.

Description of the type



■ Motor specification

Insulation type	Voltage (number of phase) (V)	Output (kW)	Rated current (A)		Load current (A)		Number of revolutions (rpm)	
			50Hz	60Hz	50Hz	60Hz	50Hz	60Hz
Type E, totally-enclosed fan-cooled type	200 (Three phase)	2.2	10.0	9.0	9.6	10.5	1500	1800

※The load current is a current value at 70 MPa.

■ Pump specification

Type	Maximum operating pressure (MPa)	Discharge volume (L/min) (50Hz/60Hz)	Tank oil level (L)	Effective oil level (L)	Attached operating valve	Approximate weight (kg)
MP-12H	70	1.5/1.8	15.0	6.5	HOV-43	105
MP-12HSL					MSL-4S-2	109
MP-12HSW					MSW-4H-2 MCH-4	115
MP-12HSB					MSW-4B-2	110
MP-12HTK					None	103

