

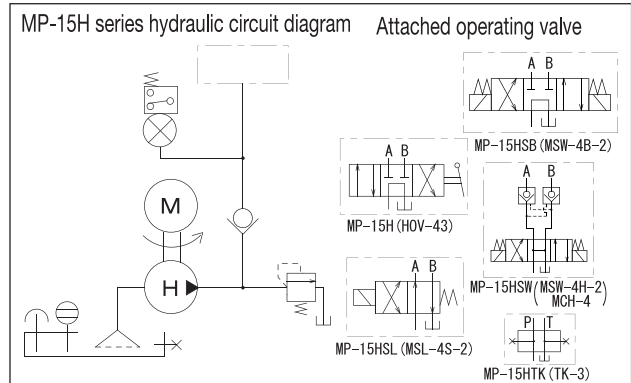
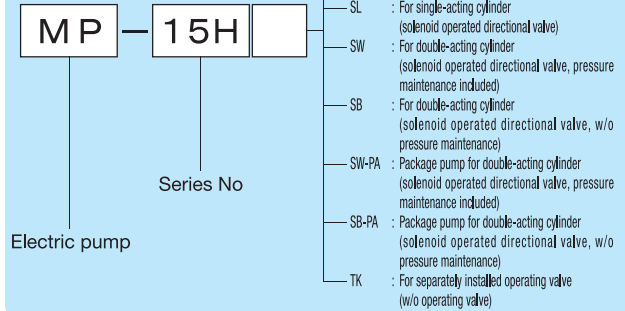
One-Stage Electric Pump (3.7 kW)

Hydraulic Pumps

■ MP-15H series

- A pump featuring a high-performance axial piston system which greatly reduces the change in discharge volume caused by pressure fluctuations.
 - Equipped with a double-safety mechanism of a safety valve and pressure switch to prevent overload.
 - A two-point push-button switch and a control box are set in the MP-15HSW-PA/SB-PA type package pump. Simply connect the power and the pump is ready to use.
 - See P. 73 and 74 for the description of each model and the instructions.
- ⚠ Power should not be supplied continuously to the solenoid valve of the MP-15HSL/15HSW/15HSB types for more than one minute to prevent adhesion of the spool.

Description of the type



■ Motor specification

Insulation type	Voltage (number of phase) (V)	Output (kW)	Rated current (A)		Load current (A)		Number of revolutions (rpm)	
			50Hz	60Hz	50Hz	60Hz	50Hz	60Hz
Type E, totally-enclosed fan-cooled type	200 (Three phase)	3.7	15.8	14.6	14.8	16.6	1500	1800

※The load current is a current value at 70 MPa.

■ Pump specification

Type	Maximum operating pressure (MPa)	Discharge volume (L/min) (50Hz/60Hz)	Tank oil level (L)	Effective oil level (L)	Attached operating valve	Approximate weight (kg)
MP-15H	70	2.5/3.0	15.0	6.5	HOV-43	120
MP-15HSL					MSL-4S-2	124
MP-15HSW					MSW-4H-2	130
MP-15HSB					MCH-4	125
MP-15HTK					None	118

