

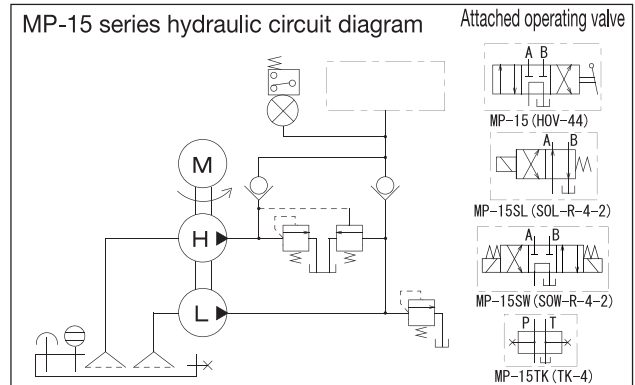
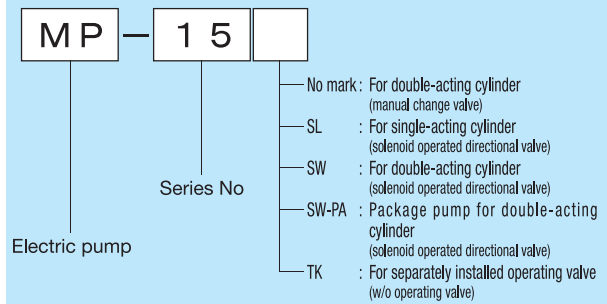
Two-Stage Electric Pump (3.7 kW)

■MP-15 series

- A pump combining both high- and low-pressure pumps to be driven by one motor to improve the work speed.
- Equipped with a double-safety mechanism of a safety valve and pressure switch to prevent overload.
- A two-point push-button and a control box are set in the MP-15SW-PA type package pump. Simply connect the power and the pump is ready to use.
- See P. 73 and 74 for the description of each model and the instructions.

⚠ Power should not be supplied continuously to the solenoid valve of the MP-15SL/15SW types for more than one minute to prevent adhesion of the spool.

Description of the type



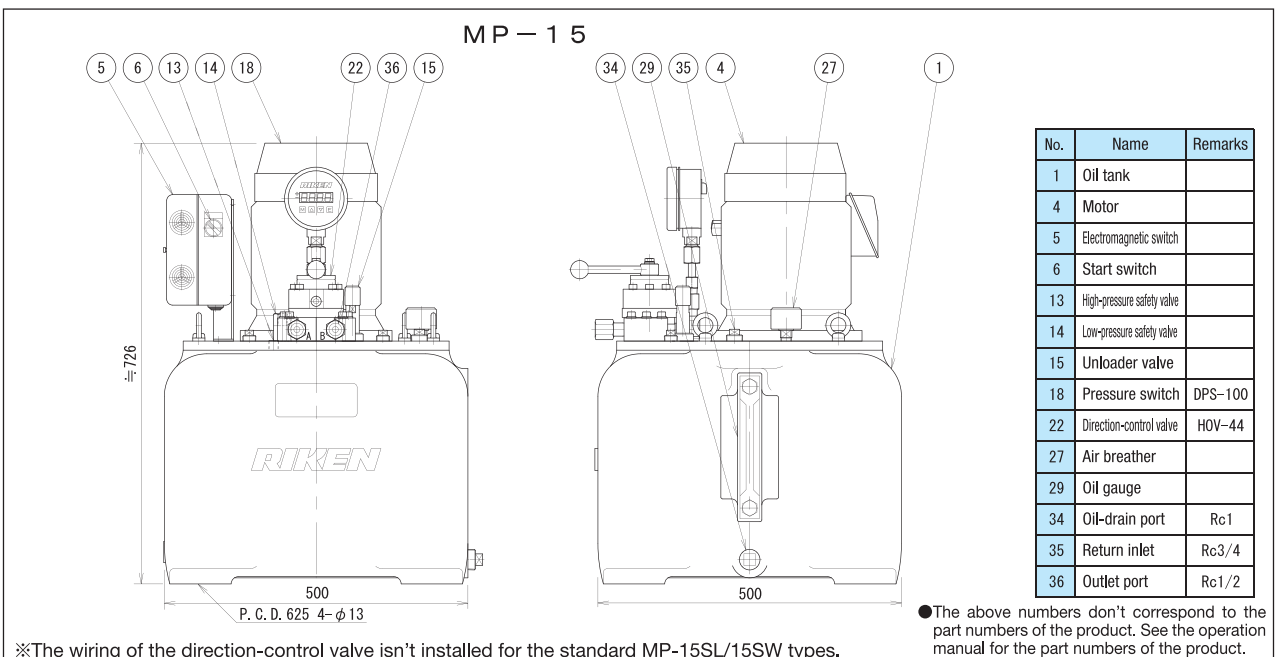
■Motor specification

Insulation type	Voltage (number of phase) (V)	Output (kW)	Rated current (A)		Load current (A)		Number of revolutions (rpm)	
			50Hz	60Hz	50Hz	60Hz	50Hz	60Hz
Type E, totally-enclosed fan-cooled type	200 (Three phase)	3.7	15.8	14.6	14.8	16.6	1500	1800

※The load current is a current value at 70 MPa.

■Pump specification

Type	Maximum operating pressure (MPa)		Discharge volume (L/min) (50Hz/60Hz)		Tank oil level (L)	Effective oil level (L)	Attached operating valve	Approximate weight (kg)
	High pressure	Low pressure	High pressure	Low pressure				
MP-15	70	6	2.5/3.0	20.0/24.0	50.0	30.0	HOV-44	190
MP-15SL							SOL-R-4-2	197
MP-15SW							SOW-R-4-2	202
MP-15TK							None	188



※The wiring of the direction-control valve isn't installed for the standard MP-15SL/15SW types.

Hydraulic Pumps