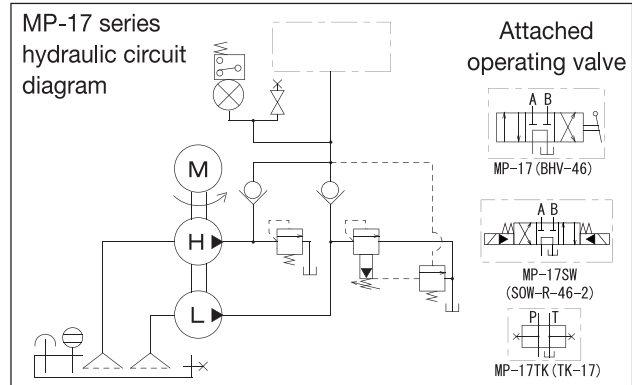
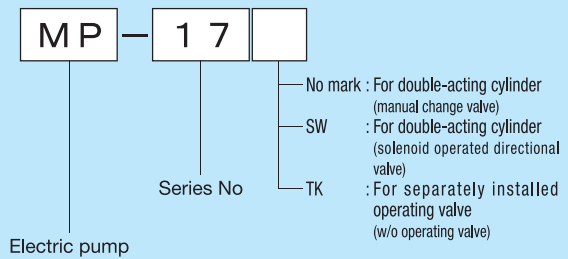


Two-Stage Electric Pump (7.5 kW)

■ MP-17 series

- A pump combining both high- and low-pressure pumps to be driven by one motor to improve the work speed.
- Equipped with a double-safety mechanism of a safety valve and pressure switch to prevent overload.
- See P. 73 and 74 for the description of each model and the instructions.
- ⚠ Power should not be supplied continuously to the solenoid valve of the MP-17SW type for more than one minute to prevent adhesion of the spool.

Description of the type



■ Motor specification

Insulation type	Voltage (number of phase) (V)	Output (kW)	Rated current (A)		Load current (A)		Number of revolutions (rpm)	
			50Hz	60Hz	50Hz	60Hz	50Hz	60Hz
Type B, totally-enclosed fan-cooled type	200 (Three phase)	7.5	30.4	28.0	32.0	38.0	1500	1800

※The load current is a current value at 70 MPa.

■ Pump specification

Type	Maximum operating pressure (MPa)		Discharge volume (L/min) (50Hz/60Hz)		Tank oil level (L)	Effective oil level (L)	Attached operating valve	Approximate weight (kg)
	High pressure	Low pressure	High pressure	Low pressure				
MP-17	70	6	5.0/6.0	40.0 /48.0	155.0	70.0	BHV-46	500
MP-17SW			4.0/5.0				SOW-R-46-2	
MP-17TK			5.0/6.0				None	

No.	Name	Remarks
1	Oil tank	
4	Motor	
5	Electromagnetic switch	
6	Push button switch	
13	High-pressure safety valve	RE-23B
14	Low-pressure safety valve	
15	Unloader valve	RUN-210D
18	Pressure switch	DPS-100
22	Direction-control valve	BHV-46
27	Air breather	Including a filler opening
29	Oil gauge	
34	Oil-drain port	Rc1 1/2
35	Return inlet	Rc1
36	Outlet port	Rc3/4

※The wiring of the direction-control valve isn't installed for the standard MP-17SW type.

●The above numbers don't correspond to the part numbers of the product. See the operation manual for the part numbers of the product.