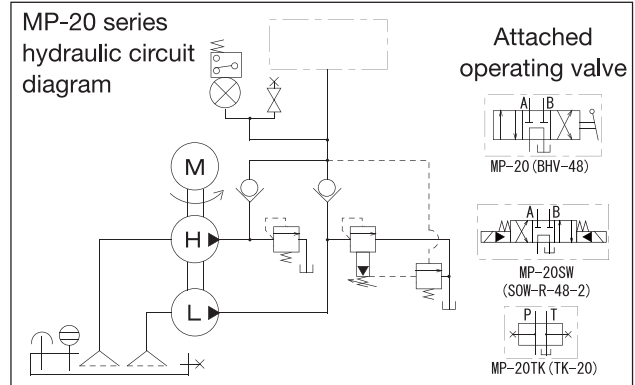
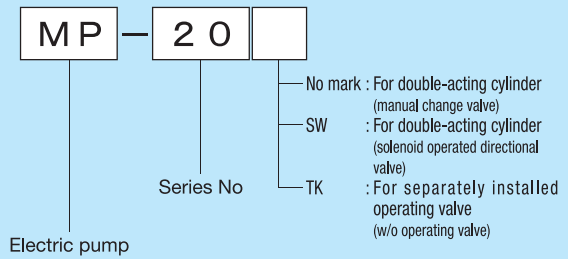


# Two-Stage Electric Pump (15 kW)

## ■ MP-20 series

- A pump combining both high- and low-pressure pumps to be driven by one motor to improve the work speed.
  - Equipped with a double-safety mechanism of a safety valve and pressure switch to prevent overload.
  - See P. 73 and 74 for the description of each model and the instructions.
- ▲ Power should not be supplied continuously to the solenoid valve of the MP-20SW type for more than one minute to prevent adhesion of the spool.

### Description of the type



## ■ Motor specification

Insulation type	Voltage (number of phase) (V)	Output (kW)	Rated current (A)		Load current (A)		Number of revolutions (rpm)	
			50Hz	60Hz	50Hz	60Hz	50Hz	60Hz
Type B, totally-enclosed fan-cooled type	200 (Three phase)	15	58.0	53.0	61.0	66.0	1500	1800

※The load current is a current value at 70 MPa.

## ■ Pump specification

Type	Maximum operating pressure (MPa)		Discharge volume (L/min) (50Hz/60Hz)		Tank oil level (L)	Effective oil level (L)	Attached operating valve	Approximate weight (kg)
	High pressure	Low pressure	High pressure	Low pressure				
MP-20	70	6	10.0/12.0	70.0 /84.0	315	160	BHV-48	800
MP-20SW			9.0/11.0				SOW-R-48-2	
MP-20TK			10.0/12.0				None	

No.	Name	Remarks
1	Oil tank	
4	Motor	
5	Electromagnetic switch	
6	Push button switch	
13	High-pressure safety valve	RE-24C
14	Low-pressure safety valve	
15	Unloader valve	RUN-210D
20	Pressure switch	DPS-100
22	Direction-control valve	BHV-48
27	Air breather	Including a filter opening
29	Oil gauge	
34	Oil-drain port	Rc1 1/2
35	Return inlet	Rc1 1/4
36	Outlet port	Rc1

※The wiring of the direction-control valve isn't installed for the standard MP-20SW type.

●The above numbers don't correspond to the part numbers of the product. See the operation manual for the part numbers of the product.

Hydraulic Pumps