

# Hydraulic Intensifier

- The secondary side generates a pressure 6.25 times the primary side and discharges oil continuously.
- With a hydraulic unit of about 14 MPa, the booster can convert the pressure into an ultrahigh pressure of 70 MPa using the unit as a drive source, enabling lightweight and compact equipment and machinery to be created.
- The discharge volume in the low-pressure unit is used under the no-load condition, and the unit operates similarly to a high-/low-pressure two-stage pump.
- We can design and manufacture units with special specifications.

※Please check the stock before ordering.  
 ※Consult us in advance if the booster will be frequently used.

## ■Specification

Booster ratio	Maximum pressure on the primary side (MPa)	Maximum pressure on the secondary side (MPa)	Minimum input capacitance on the primary side (L/min)	Rated input capacitance on the primary side (L/min)	Rated input capacitance on the secondary side (L/min)	Bore diameter (Rc)
1 : 6.25	11.2	70	5.0	20.0	2.4	3/8

※The discharge volumes will change depending on the load on the secondary side.

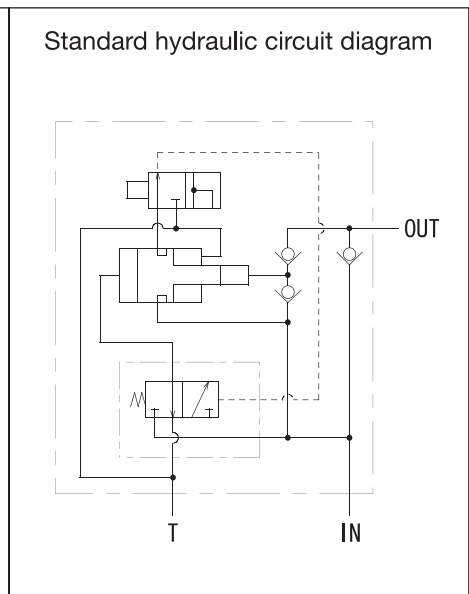


Hydraulic Pumps

**RKB-20-140S**  
 (Approximate weight: 5.7 kg)

Booster change valve  
 Booster body

※A direction-control valve for actuator is necessary on the secondary side.



**RKB-20-140W**  
 (Approximate weight: 9.5 kg)

Pressure switch (optional)  
 Pilot check valve  
 Booster change valve  
 Booster body

A OUT  
 B OUT  
 A IN  
 B IN

※A and B have IN/OUT respectively, hence the 4-way valve on the primary side can operate the double-acting cylinder on the secondary side.

