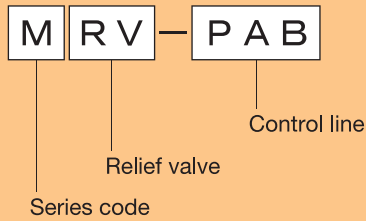


M Series Pressure Control Valve

Relief Valve

Description of the type



●The P/A/B lines can be adjusted, and the line to adjust can be selected after build-in. (Individual adjustment cannot be made.)

Maximum flow 0 – 8 MPa: 15 L/min
8 – 70 MPa: 3 L/min

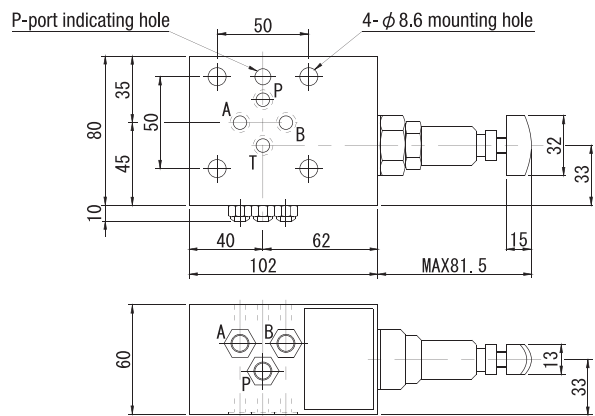
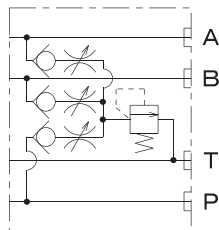
Specification

Type	Pressure control range (MPa)	Bolt insert length	Approximate weight (kg)
MRV-PAB	10~70	60	5.0

MRV-PAB

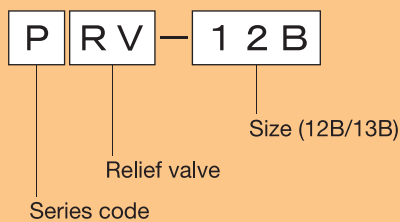


Circuit designation



Electromagnetic Proportional Relief Valve

Description of the type



Specification

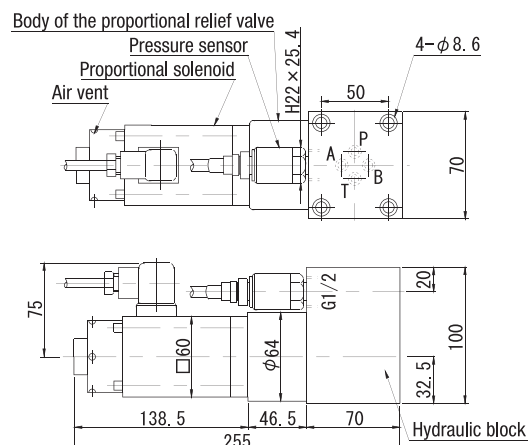
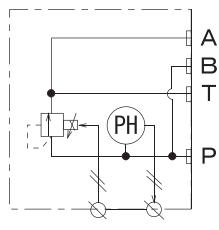
Type	Flow range (L/min)	Control range (MPa)	Approximate weight (kg)
PRV-12B	0.25~1.0	5~70	5.5
PRV-13B	0.8~3.0		

※An exclusive controller is necessary. (ECR-1B12/ECR-1B13)
 ※The proportional relief valve must be always used with an inline filter. (See P. 140.)
 ※See P. 112 for the details of this product.

PRV-12B



Circuit designation



Hydraulic Valves