

# M Series Check Valve

Maximum operating pressure	Maximum flow
70MPa	0~ 8MPa : 15L/min
	8~ 70MPa : 3L/min

## ■ Inline Check Valve (for the control of one circuit)

Description of the type

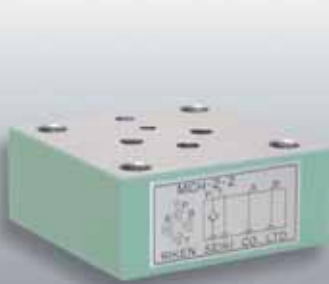
**M** **CH** - **2-2**

Series code      Check valve      Type (2-2/2-3)

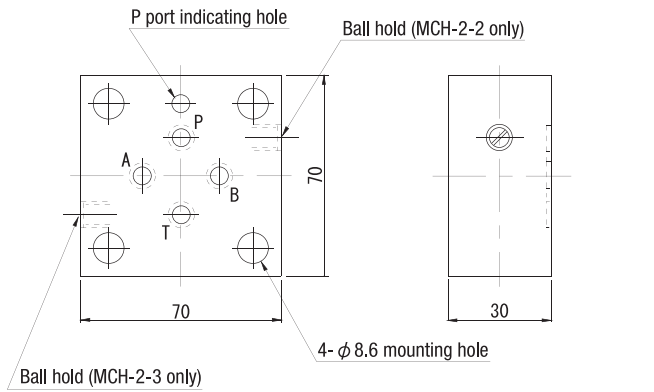
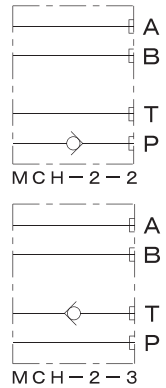
## ■ Specification

Type	Cracking pressure (MPa)	Bolt insert length	Approximate weight (kg)
MCH-2-2	0.02	30	1.1
MCH-2-3			

MCH-2-2



Circuit designation



※The dimensions of MCH-2-2 and 2-3 are the same.

## ■ Pilot Controlled Check Valve

Description of the type

**M** **CH** - **4**

Series code      Check valve      Type

●Pilot area ratio: 9:1

## ■ Specification

Type	Cracking pressure (MPa)	Bolt insert length	Approximate weight (kg)
MCH-4	0.16	70	4.4

MCH-4



Circuit designation

