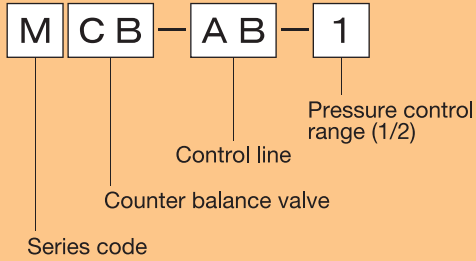


# M Series Pressure Control Valve / Flow Control Valve

| Maximum operating pressure | Maximum flow      |
|----------------------------|-------------------|
| 70MPa                      | 0~ 8MPa : 15L/min |
|                            | 8~70MPa : 3L/min  |

## Counter Balance Valve

### Description of the type



- Normally, the internal pilot is set but can be changed to the external pilot when the head is rotated 180 deg.
- The A line can be controlled by rotating the head 180 deg horizontally.
- Can also be used as a sequence valve.

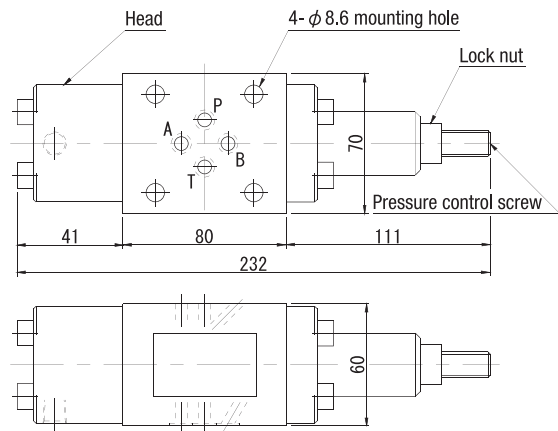
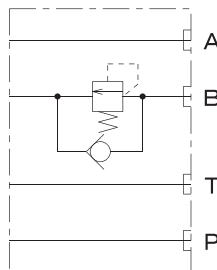
### Specification

| Type     | Pressure control range (MPa) | Bolt insert length | Approximate weight (kg) |
|----------|------------------------------|--------------------|-------------------------|
| MCB-AB-1 | 2~10                         | 60                 | 4.0                     |
| MCB-AB-2 | 10~70                        |                    |                         |

M C B - A B - 1

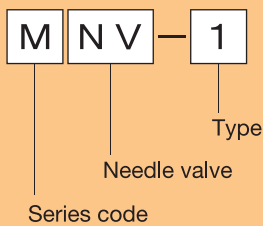


### Circuit designation



## Needle Valve

### Description of the type

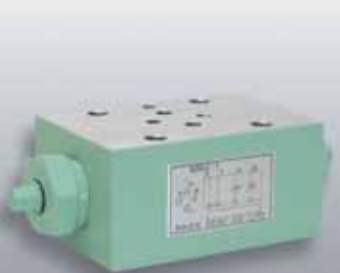


- The A and B lines can be adjusted individually.
- The flow rate changes when the pressure and the temperature change.
- The oil passage is closed completely when the valve is closed fully.

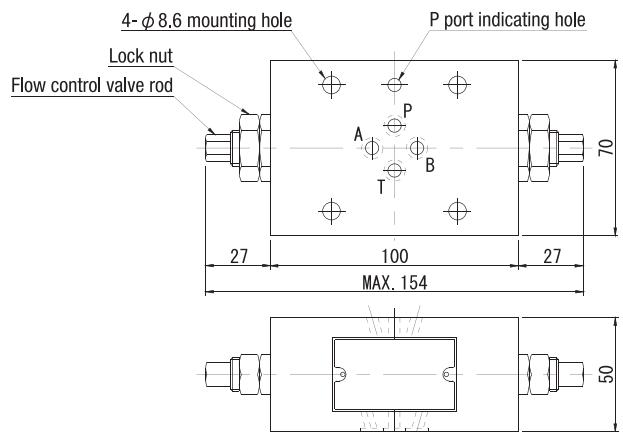
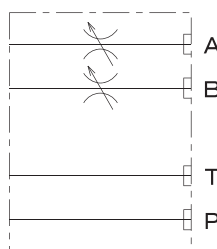
### Specification

| Type  | Bolt insert length | Approximate weight (kg) |
|-------|--------------------|-------------------------|
| MNV-1 | 50                 | 2.7                     |

M N V - 1



### Circuit designation



Hydraulic Valves