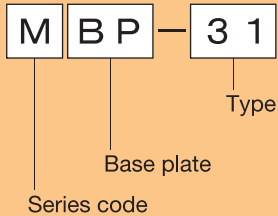


M Series Plate

Maximum operating pressure	Maximum flow
70MPa	0~ 8MPa : 15L/min
	8~70MPa : 3L/min

■ Base Plate

Description of the type



●Used as a base when a circuit using a block is placed separately from the pump. It is connected with the pump by piping.
(Cannot be stacked to the pump.)

■ Specification

Type	Connection diameter (Rc)	Approximate weight (kg)
MBP-31	3/8	3.4

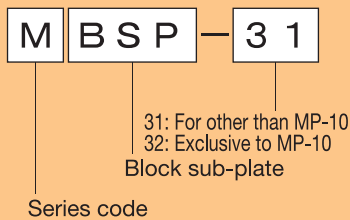
Hydraulic Valves

MBP-31

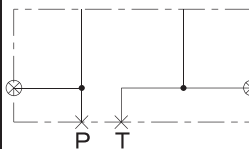
Circuit designation

■ Block Sub-Plate

Description of the type



Circuit designation



●Necessary as a sub-plate for a block when the block is used to stack Riken's pump unit.
●The compatible pumps are MP-5/6/10/12/12H/15H. MBSP-32 should be used for MP-10.

■ Specification

Type	Connection diameter (Rc)	Mounting bolt (hexagon socket head cap screw)	Approximate weight (kg)
MBSP-31	3/8	M8 × 50	6.5
MBSP-32		M8 × 35	3.1

MBSP-31

MBSP-32