

# M Series Plate

Maximum operating pressure	Maximum flow
70MPa	0~ 8MPa : 15L/min
	8~70MPa : 3L/min

## Change Plate

### Description of the type

**M CP - R - M4**

**M**: Series code  
**CP**: Change plate  
**R**: Main part  
     R: R4 series  
     M: Each M series  
**M4**: Change surface  
     M4: Mounting each M series  
     R4: Mounting the R-4 series  
     K: Mounting the KD series  
     K2: Mounting the KD series 2-way valve  
     K3: Mounting the KD series 3-way valve  
     KD: Mounting the KD series bleeder valve  
     G2: Mounting the GSL series

## Specification

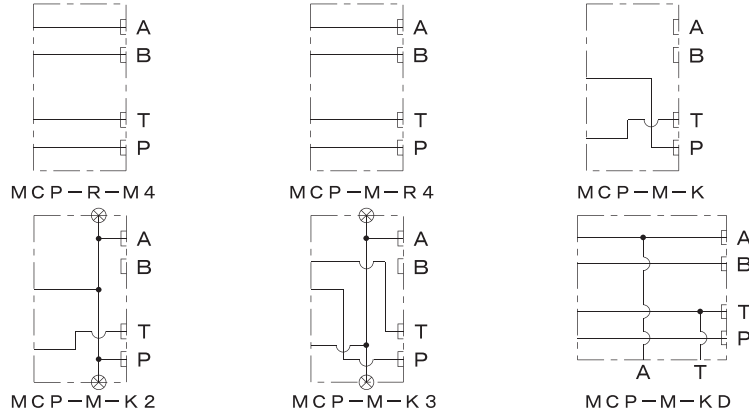
Type	Bolt insert length	Approximate weight (kg)
MCP-R-M4	20	1.3
MCP-M-R4		1.4
MCP-M-K	30	1.5
MCP-M-K2		1.7
MCP-M-K3		2.4
MCP-M-KD	50	1.7
MCP-M-G2	35	

- MCP-R-M4 is used when the R-4 series solenoid valves are changed to the solenoid valves of each M series equipment.
- MCP-M-R4 is used when each M series equipment solenoid valves are changed to the R-4 series solenoid valves.
- MCP-M-K/K2/K3/KD are used when the solenoid valves of each M series equipment are changed to the KD series solenoid valves.
- MCP-M-G2 is used when each M series equipment is changed to the GSL series.

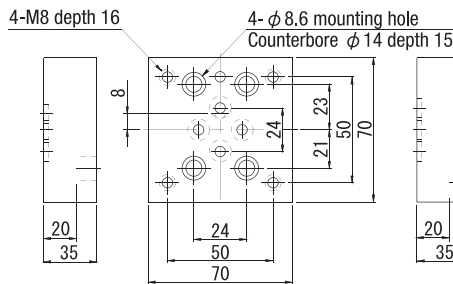
MCP-M-R4



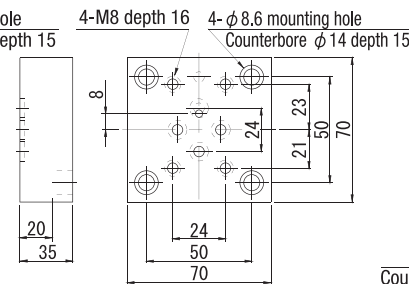
### Circuit designation



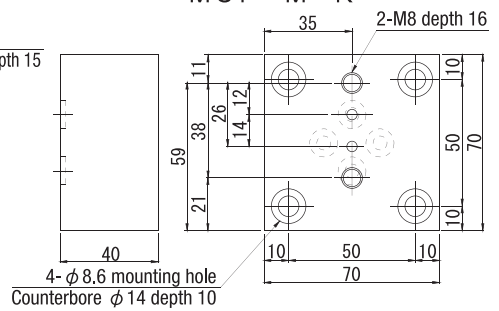
MCP-R-M4



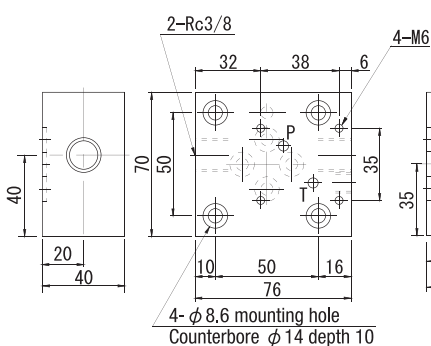
MCP-M-R4



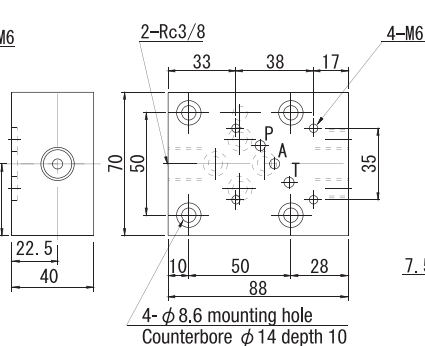
MCP-M-K



MCP-M-K2



MCP-M-K3



MCP-M-KD

